



MONTHLY MEMBERSHIP PROGRESS REPORT

District 14 N

Results as of: 06/30/2018

GMT: CINDY GREGG

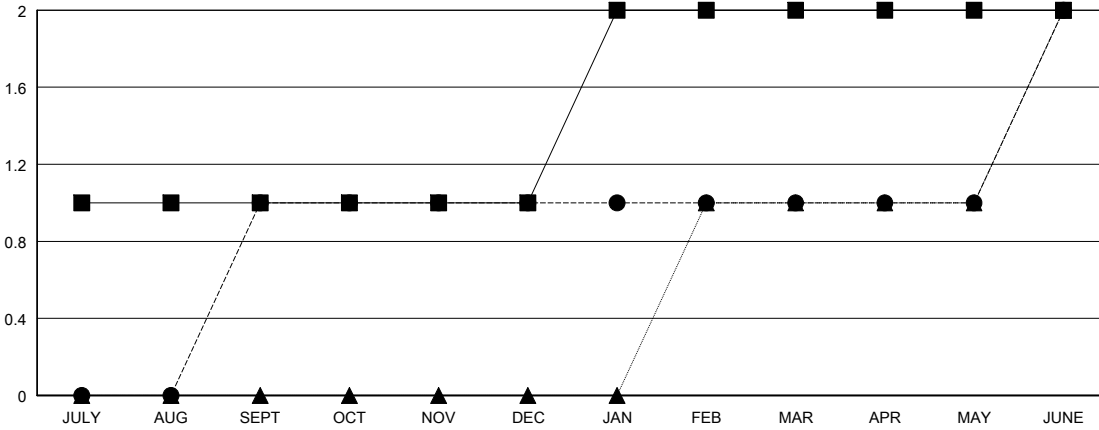
LOCATION PENNSYLVANIA

GMT CA

Clubs			
RESULTS FOR 2017-2018			
QUARTER	NEW CLUB GOAL	NEW CLUBS	DROPPED CLUBS
JULY/AUG/SEPT	1	1	0
OCT/NOV/DEC	0	0	0
JAN/FEB/MAR	1	0	0
APR/MAY/JUNE	0	1	0

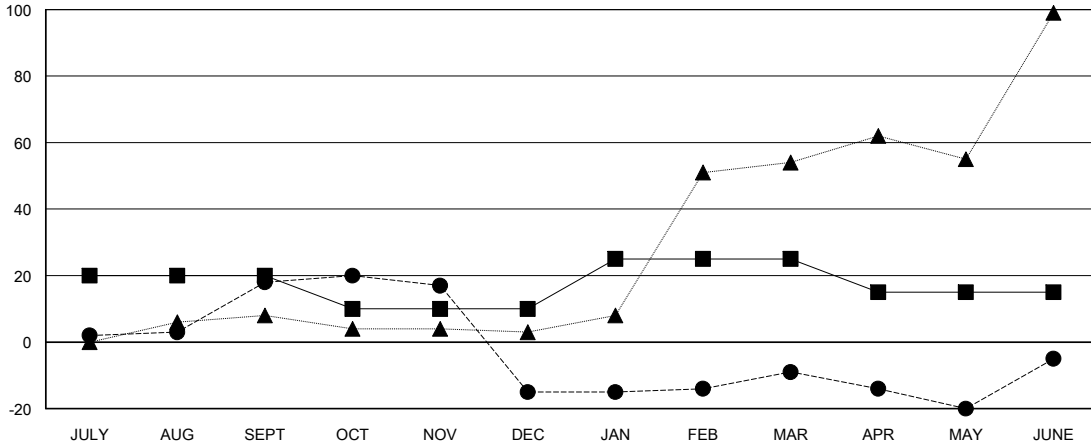
Members			
RESULTS FOR 2017-2018			
QUARTER	MEMBER GROWTH NET GOAL	MEMBER GROWTH ACTUAL	DROPPED MEMBERS ACTUAL (including transfers)
JULY/AUG/SEPT	20	39	17
OCT/NOV/DEC	-10	20	51
JAN/FEB/MAR	15	21	15
APR/MAY/JUNE	-10	62	53

GOALS AND ACTUAL NEW CLUBS CUMULATIVE



- - CURRENT YEAR GOALS FOR NEW CLUBS
- - CURRENT YEAR ACTUAL NEW CLUBS
- ▲ - LAST YEAR ACTUAL NEW CLUBS

GOALS AND ACTUAL MEMBERS CUMULATIVE



- - MEMBER GROWTH NET GOAL
- - MEMBER GROWTH ACTUAL
- ▲ - LAST YEAR MEMBERSHIP ACTUAL

DROPPED CLUBS: 0

24 CLUBS OF 41 ADDED 1 OR MORE NEW MEMBERS

GENDER DISTRIBUTION	
MALE	744 (69.99%)
FEMALE	319 (30.01%)
Women Percentage Fiscal Year Goal: 30%	

DROPPED MEMBERS	
DECEASED	14
CLUB CANCELLED	0
OTHER	122
TOTAL	136

[CLICK HERE FOR CUMULATIVE MEMBERSHIP DATA](#)

TOTAL FAMILY UNIT MEMBERS	0
FAMILY MEMBERS PAYING HALF DUES	0